



About Us

Quality, High Performance, and top service... this is what Systems for Mechanical Applications (SMA) stands for. Supplying the customers with pioneer solutions for water infrastructure and providing a high end aftersales service is the major advantage you gain by working with SMA.

Our commitment to supply the highest quality products is achieved through our partnerships with worldwide internationally well-known companies such as Georg Fischer, VAG-Armaturen and ITAP.

We provide a huge variety of products that will fulfill your needs for your piping system. Valves, brass fittings, cast iron fittings, pipes, welding machines and the list goes on. All the above items are always available on our shelves just for your demands.

Of course, we offer full and comprehensive training and technical support to help you overcome any difficulties and obstacles during your work.

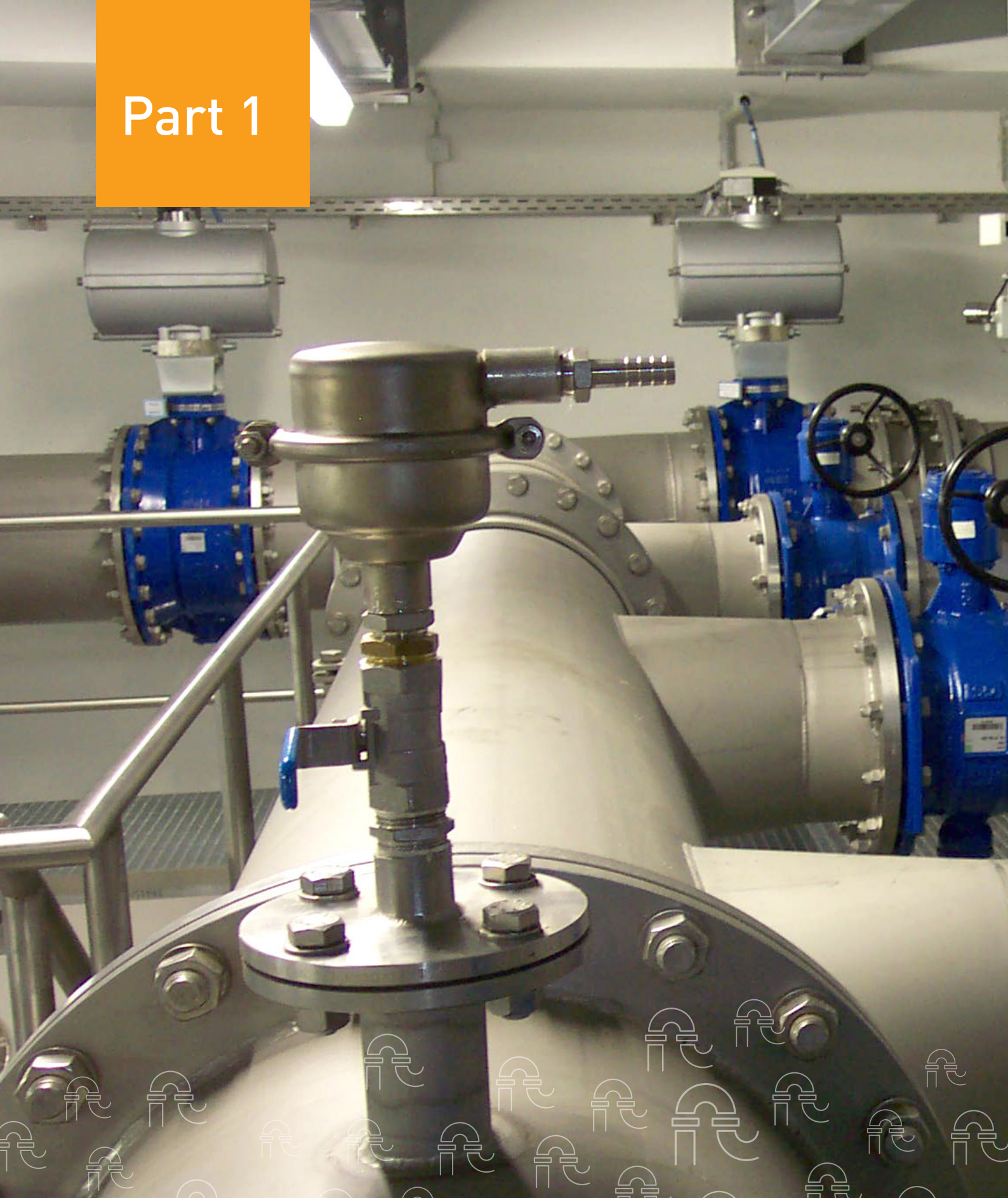
With SMA you don't get only high quality fittings, you also get a full package of reliable and outstanding services.

We are a One Stop Shop

Index

Part01: Valves	04
Part02: Couplings	14
Part03: Measuring Devices	19
Part04: Malleable Cast Iron Fittings	22
Part05: Electro Fusion Fittings	30
Part06: Brass Valves and Fittings	36
Part07: Flanges	65
Part08: Pipes and Pipes Fittings	67
Part09: PEX pipes' brass fittings	76
Part10: Water Pumps	78
Part11: Utility fittings installation tools	82
Part12: Accessories	86

Part 1



Valves



Valves

Gate Valves

- Resilient seated gate valves



Function: Isolating valve for pressure pipelines

Technical data:

- » DN 50-1200.
 - » PN 10, 16, 25.
 - » Main materials: Ductile iron, EPDM/ NBR.
 - » Coating: blue epoxy powder, vitreous enamel.
 - » Operation types: non rising stem, outside screw & yoke, square cap, hand wheel, ISO flange for actuator, gearbox, electric actuator, pneumatic actuator, underground adaptor.
 - » End configuration: ISO flange, Tyton and PVC socket, spigot, PE ends, sockets for PE, grooved, threaded.
 - » Media: potable water, raw, waste, industrial, salt, irrigation.
 - » Standard: ISO, EN, BS, ANSI, TRL, TRS, TR- AWWA.
-

- Metal seated gate valves



Function: Raw, potable, waste water isolation, pumping

Technical data:

- » DN 50-2000.
- » PN 16, 25, 40.
- » Materials: Cast iron, Brass, Bronze, St. Steel, Gunmetal.
- » Coating: Blue epoxy powder.
- » Operation types: Non rising stem, square end, hand wheel, chain-wheel, electrical actuator.
- » End configuration: Flanged.
- » Media: Industrial water.
- » Standards: BS, EN, ISO.

Butterfly Valves

- Double eccentric butterfly valves



Technical data:

- » DN 150 - 3600
- » PN 10, 16, 25, 40
- » Main Materials: Ductile iron, cast steel, EPDM, NBR
- » Coating: Blue epoxy powder, vitreous enamel, rubber lined
- » Operation types: Gearbox, ISO actuator top, ON / OFF electrical actuator, weight loaded hydraulic actuator, pneumatic actuator
- » End configuration: Flanged
- » Media: Potable, salt, raw water
- » Standards: EN, ISO, BS

Function: Water transmission, cooling, water intake, pumping, pipe burst shut-off valve

- Centric butterfly valves



Technical data:

- » DN 50 - 1800
- » PN 10, 16
- » Materials: Ductile iron, EPDM, NBR, Hypalon, (316, 431, duplex) stainless steel, gunmetal, aluminium-bronze
- » Coating: Fusion bonded blue epoxy powder, wet applied blue epoxy
- » Operation types: Gearbox, ISO actuator top, ON / OFF electrical, pneumatic actuator
- » End configuration: Flanged, wafer & lug type
- » Media: Potable, raw, salt, cooling water,
- » Standards: EN, ISO, BS

Function: Water transmission, cooling, water intake isolation, pumping, control, HVAC

Valves

Air Valves

- Combination Air Valve



Technical data:

- » DN 50 - 250.
- » PN 16 , 25.
- » Coating: Fusion bonded epoxy coating
- » End configuration: ISO (DIN) ,EN, ANSI, BSP, NPT.
- » Float: Polycarbonate / Stainless Steel.
- » Triple function operation.

Function: Municipal and industrial water conveyance systems, Water pipelines vulnerable to vandalism and/or water theft, Water systems found in remote areas

- Automatic Air Release Valve



Technical data:

- » DN 15-25.
- » PN 16, 25, 40.
- » Main materials: Polypropylene, Reinforced Nylon, Brass, Ductile Iron.
- » End configuration: BSP , NPT.
- » Float: Polypropylene / Stainless Steel.

Function: On most types of pumps, after filters, pressure reducers and fertilizer injection systems, on heads of landscape systems

Swing Check Valves

- Swing Check Valves



Technical data:

- » DN 50-250
- » PN 10, 16 , 25, 40
- » Main materials: Ductile iron, Cast Steel
- » End configuration: ISO (DIN) ,EN, ANSI
- » Coating: enamel-coated body or stainless steel body
- » With lever and weight / with External Damper

Function: Pump stations for potable water and wastewater, Filtration systems, Service line connections to the main line.

- Waste Water Swing Check Valves



Technical data:

- » DN 50-250
- » PN 10, 16
- » Main materials: Ductile Iron, Cast Steel.
- » End configuration: ISO (DIN), EN, ANSI.
- » Coating: Enamel Coating body or stainless steel body.
- » With lever and weight / with External Damper.

Function: Pump stations for wastewater. Filtration systems, Service line connections to the main line.

Valves

Strainers

- Strainer



Technical data:

- » DN 50-500
- » PN 10, 16 , 25, 40
- » Main materials: Ductile iron, Cast Steel, St. Steel 316
- » Coating: blue epoxy powder, vitreous enamel
- » Patterns: "Y" (globe) & angle
- » End configuration: Flanged
- » Cover: Steel
- » Screen / Basket: Stainless Steel 304 , Stainless Steel 316

Function: Strainer is designed to remove foreign matter such as stones, sticks etc. from the pipeline.



Valves

Control Valves

- Pressure Reducing Valves



Technical data:

- » Independent of variations of the inlet pressure / flow rate, the valve regulates a higher inlet pressure to a constant, lower outlet pressure.
- » DN 50 - DN 300.
- » PN 16, PN 25, PN 40.

- Float Control Valve



Technical data:

- » The valve retains a constant water level in a tank. As soon as water level is reduced, the valve opens and closes when the level is reached.
- » DN 50 – DN300.
- » PN 16, 25.
- » Available for single level, and bi-level applications.

- Level Control Valve



Technical data:

- » Valve used for retaining an adjustable (constant) water level in a tank, for drinking water of up to 50° C.
- » The valve retains a constant water level in a tank. As soon as water level is reduced, the valve opens and closes when the level is reached.
- » DN 50 – DN 300.
- » PN 16, 25.

Control Valves

- Flow Control Valve



Technical data:

- » Flow Control Valve is a hydraulically operated, diaphragm actuated control valve that maintains pre-set maximum flow, regardless of fluctuating demand or varying system pressure.
- » DN 50 – DN 300.
- » PN 16, 25.
- » Model with solenoid is available upon request.

- Pressure Sustaining Valve



Technical data:

- » The Pressure Relief/Sustaining Valve is a hydraulically operated, diaphragm actuated control valve that can fulfill either of two separate functions.
- » When installed in-line, it sustains minimum pre-set, upstream (back) pressure regardless of fluctuating flow or varying downstream pressure.
- » When installed as a circulation valve, it relieves excessive line pressure when above maximum pre-set.
- » DN 50 – 300.
- » PN 16, 25.
- » Angle valve is available upon request.
- » DN 50mm is available in both threaded or flanged models.

Part 2



Couplings



Couplings

Sleeve & Flanged Couplings

- Flanged Coupling



Technical data:

- » DN 50 - 500.
- » PN 16, 25.
- » Main materials: Ductile iron, steel, EPDM / NBR.
- » Coating: Fusion bonded blue epoxy.
- » Gaskets: EPDM or NBR.
- » Operation types: Sealing.
- » End configuration: Flanged for rigid pipes.
- » Media: Potable, raw, sewage, salt water.
- » Standard: EN, ISO, BS, DIN.

Function: Sealed connection between two spigot ends of same O.D

- Sleeve Coupling



Technical data:

- » DN 50 - 500.
- » PN 16, 25.
- » Main materials: Ductile iron, steel, EPDM / NBR.
- » Coating: Fusion bonded blue epoxy.
- » Gaskets: EPDM or NBR.
- » Operation types: Sealing.
- » End configuration: Socket for rigid pipes.
- » Media: Potable, raw, sewage, salt water.
- » Standard: EN, ISO, BS, DIN.

Function: Sealed connection between two spigot ends of same O.D

Repair Clamps

- Repair Clamps



Technical data:

- » DN 50–600.
- » PN 16.
- » Main materials: 304 stainless steel, ductile iron, EPDM / NBR
For steel, PVC, ductile iron, GRP and asbestos cement pipes
- » Operation types: Single part, two parts, three parts adjustable on pipe.
- » Media: Potable, raw water, sewage, salt water.

Function: The repair clamps are used for the repairs of localized breakages or circumferential breakages on pipelines for all materials types used in drinkable water services

Dismantling Joints

- Dismantling Joints



Technical data:

- » DN 50–800.
- » PN 16, 25, 40.
- » Main materials: Ductile iron, steel, EPDM / NBR.
- » Coating: Fusion bonded blue epoxy, vitreous enamel, rubber.
- » Gaskets :EPDM.
- » Operation types: 100%, 50%, 25%, 0% restrained types available Tie-rods Zinc electroplated or hot dip galvanized, (stainless steel AISI 316 - A4 on request).
- » End configuration: Flange / flanged ends, flanged end/ plain end.
- » Media: Potable, raw, sewage, salt water, compressed air.
- » Standard: EN, ISO, BS, DIN.

Function: Sealed connection between two spigot ends of same or different O.D

Couplings

Flexible Expansion Joints

- Flexible Expansion Joint



Technical data:

- » DN 50–500.
- » PN 16 , 25 , 40.
- » End configuration: Flanges, Weld Ends.
- » End connection Material : 304SS, 316SS, CS.
- » Bellows: stainless steel, Rubber.
- » Standard: ANSI, DIN.

Part 3



Measuring Devices

Measuring Devices

Multi - Jet / Volumetric Water Meters

- Multi Jet / Volumetric Water Meter



Technical data:

- » DN 15-50
- » PN 10, 16
- » Main materials: Corrosion proof copper alloy
- » End Configuration: BSP, NPSM
- » Working Temperature: 50°C, 90°C - For hot water
- » Standards: MID 2004/22/EC (based on OIML R49 EN 14154 and ISO 4064:2005), EEC (based on ISO 4064:1993), AWWA C708, WRAS, NSF etc.
- » Metrological Class: B, C, R 80 - R200

Function: For domestic, agriculture & industrial use.

Mechanical Water Meters

- Mechanical Water Meters



Technical data:

- » DN 50-300
- » PN 10, 16 , 25, 40
- » Main materials: Cast Iron, Polyester Coated,
- » End Configuration: ISO,EN, ANSI , BSP , NPT
- » Working Temperature: Up to 40°C for Cold Water
- » Standards: DIN ISO 4064 and/or DIN ISO 19684 Part 3, DIN EN 1434

Function: Water supply networks, agricultural applications & industrial use.

Electromagnetic Water Meters

- Electromagnetic Water Meters



Function: For domestic, agriculture and industrial use.

Technical data:

- » DN 50-2000
- » PN 10, 16, 25 , 40 , 64
- » End Configuration: ISO,EN, ANSI , ASME
- » Working Temperature: 50°C , 90°C - For hot water
- » Lining Hard rubber, soft rubber, PTFE, PFA, ETFE
- » Protection class IP 67 or IP 68
- » Fluid temperature Up to 180 °C (356 F)
- » Ex approvals ATEX, IEC Zone 1 and Zone 2, FM, CSA Div1 and Div2, NEPSI Zone1 and Zone2, GOST
- » Inputs/Outputs: Analog output (4...20 mA), pulse output, contact input/output
- » Communication HART protocol (standard)
- » Verification tool "ScanMaster" software

Prepaid Water Meters

- Prepaid Water Meters



Function: For domestic, agriculture & industrial use.

Technical data:

- » ID Certificated
- » Easy analysis of water consumption by rich reports on PC
- » Contactless card usage ensures isolation against external affects
- » Setting up different tariffs, LCD display with backlight
- » IP68 protected electronic circuit and mechanical meter
- » Check valve disabling bi-directional water flow
- » Sleeve security check and electronic sensor
- » Lithium battery replaced by local administration
- » Suitable for cold water up to 50°C, almost no maintenance
- » All spare parts available, wide range of service network
- » Leakage control system, 3 years of warranty

Part 4



Malleable Cast Iron Fittings.



Malleable Cast Iron Fittings

Threaded Fittings Galvanized/ Black

Malleable cast iron fittings are offered in black and hot dip galvanized version. Because of their durability, high mechanical stress and temperature resistance these fittings continuously enjoy great popularity. The thread according to EN 10226-1 is an universal, standardised jointing technology and ensures a safe use in a broad field of application. Additionally to the threaded fittings, a compression fitting made of malleable cast iron is available. These Fittings are capable to withstand a pressure of PN25 bar.



Backnut



Backnut,
recessed



Bend 15°



Bend 15°



Bend 30°



Bend 30°



Cross,
Reducing



Crossover



Cross,
Equal



Malleable Cast Iron Fittings



Elbow 45°



Elbow 45°



Elbow 90°



Elbow 90°
Equal



Elbow 90°,
female thread
reduced



Elbow 90°,
male thread
reduced



Cap



Elbow 90°,
reducing



Elbow 90°



Hexagon
nipple, re-
ducing



Hexagon
nipple,
right and
left hand
thread



Hexagon
nipple



Long
sweep
bend 45°



Long
sweep
bend 45°



Long
sweep
bend 90°



Long
sweep
bend 90°



Long
sweep
bend 90°



Pitcher
tee, equal

Malleable Cast Iron Fittings



Plug, beaded



Plug, Plain



Return bend



Plug, with
hole in
square
head



Reducing
bush



Socket



Socket,
reducing



Socket,
right & left
hand thread



Tee, equal



Tee, equal



Union
bush



Union
elbow,
flat seat



Union elbow,
taper seat



Union taper
seat



Y-piece



Tee
reducing

Compression Fittings (PRIMO FIT)



**Coupling,
short,
galvanized
equal**



**Coupling,
short,
galvanized
reducing**



**Coupling,
long,
galvanized
equal**



**Female
Adaptor,
galvanized**



**Male Adaptor
galvanized
equal**



**Threaded
Outlet Tee,
galvanized**



**Tee,
galvanized
equal**



**Elbow,
galvanized**



**Coupling,
short,
black
equal**



**Coupling,
short, black
reducing**



**Male
Adaptor,
black**



**Female
Adaptor,
black**



Malleable Cast Iron Fittings



Cap, black



Insert Stiffener for PE SDR 11



Insert Stiffener for PE SDR 7.4



Elbow, black



Tee, black equal



Threaded Outlet Tee, black



Repair System



Repair clamp short, galvanized



Repair clamp long, galvanized



Cap, galvanized



Seals FPM



Female Adaptor Elbow, galvanized



Spare Packs



Spare Packs FPM



Lead - Spare Packs



Spare Pack + Insert Stiffener



FIREJOINT Spare Packs



Spare Pack 3/8



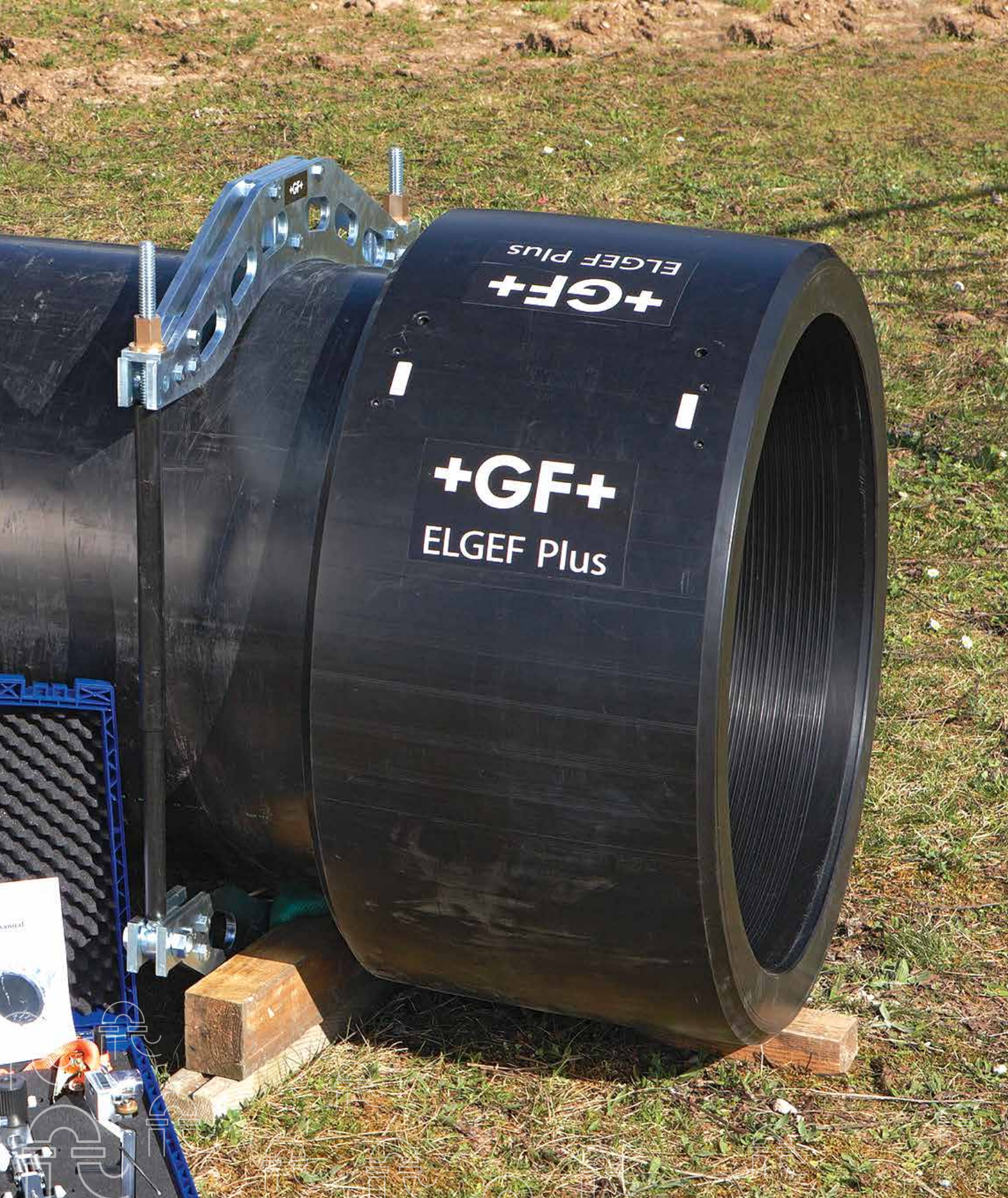
TIP:

“ PRIMOFIT Fittings are time-saving connection of steel-pipes, PE-pipes, lead-pipes and butt-weld steel pipes. ”

Part 5



Electro Fusion Fittings



Brass Valves and Fittings

ELGEF Plus Saddles

Tapping saddle Monobloc version



Tapping saddle With 360° rotatable outlet



Technical data:

- » PE 100 SDR 11 (ISO S5)
- » 10 bar Gas / 16 bar Water
- » With integrated cutter to tap live mains under pressure
- » Complete with lower part
- » 4 mm pin connectors
- » Limited path fusion indicators
- » Long fusion outlet
- » O-ring-sealed screw cap

ELGEF Plus Elbows

Elbow 90° with/without integral pipe fixation



transition elbow 90° PE/brass (CW617N) Male thread



Technical data:

- » PE 100 SDR 11 (ISO S5)
- » 10 bar Gas / 16 bar Water
- » 4 mm pin connectors
- » Limited path fusion indicators

ELGEF Plus Couplers

Coupler



**Transition coupler PE/
brass (CW617N) Male
thread**



Technical data:

- » PE 100 SDR 11 (ISO S5)
- » 10 bar Gas / 16 bar Water
- » 4 mm pin connectors
- » Limited path fusion indicators.
- » Removable centre stop

ELGEF Plus Tees

Tee 90° equal with/without integral pipe fixation



Technical data:

- » PE 100 SDR 11 (ISO S5)
- » 10 bar Gas / 16 bar Water
- » 4 mm pin connectors
- » Limited path fusion indicators

Brass Valves and Fittings

ELGEF Plus End Caps

End Cap with/without integral pipe fixation



Technical data:

- » PE 100 SDR 11 (ISO S5)
- » 10 bar Gas / 16 bar Water
- » 4 mm pin connectors
- » Limited path fusion indicators

ELGEF Plus Reducers

Reducer with/without integral pipe fixation



Technical data:

- » PE 100 SDR 11 (ISO S5)
- » 10 bar Gas / 16 bar Water
- » 4 mm pin connectors
- » Limited path fusion indicators

Electro Fusion Welding Machines



Technical data:

- » Main Frequency: 50-60 Hz.
- » Fusion data input mode: barcode, manual.
- » Mains Voltage: 230V (190V - 265V).
- » Suggested power generators: 3.5kVA
- » Welding technique: Voltage controlled
- » Fusion Voltage: 8-48V
- » Fusion current: 110A (Max)
- » Fittings range: d16-1400mm
- » USB Port: Type A
- » Operating Temperature: -20C to +50C
- » Internal memory capacity: 5000 Protocols
- » Protocols format: PDF, CSV and BIN (compatible with MSA Welding Book)
- » Protection factor: Class 1 / IP 65
- » Mains Cable: 4mm
- » Fusion Cable: 4mm
- » Dimensions: 280 x 480 x 280mm
- » Weight: ca. 12,8 kg.
- » Display: Graphical LCD, adjustable contrast
- » Languages Support: 27



Part 6



Brass Valves and Fittings



Brass Valves and Fittings

Valves Check & Foot Valves

ART.101 Block® Check Valve



Body in brass.
Plate in polymer.
O-ring in NBR.
Spring in stainless steel.
Size: 1/2" -2"
PN 10-12

ART.106 Block® Foot Valve



Body in brass.
Plate in polymer.
O-ring in NBR.
Spring in stainless steel.
Size: 1/2" -2"
PN 10-12

ART.100 Europa® Check Valve



Body in brass.
Plate in stainless steel.
Washer in NBR.
Spring in stainless steel.
Size: 1/2" -4"
PN 12-25

ART.105 Europa® Foot Valve



Body in brass.
Plate in stainless steel.
Washer in NBR.
Spring in stainless steel.
Strainer in polymer & stainless steel.
Size: 1/2" -4"
PN 12-25

ART.140 Foot Valve



Body and strainer in brass. Strainer washer in fiber. Plate in brass.
Washer in NBR.
Size: 1/2" -4"
PN 6-10

ART.108 York® Foot Valve



Body in brass.
Plate in polymer.
Washer in NBR.
Spring in stainless steel.
Strainer in polymer & stainless steel.
Size: 1/2" -4"
PN 6-12

ART.130 Swing Check Valve



Body in brass.
O-ring for upper plug in NBR. O-ring of the side plug in NBR.
Plate in brass.
Size: 1/2" -4"
PN 8-16

ART.103 York® Check Valve



Body in brass.
Plate in polymer. Washer in NBR.
Spring in stainless steel.
Size: 1/2" -4"
PN 8-12

Valves Ball Valves & Gate Valves

Art.076

Madrid® Ball Valve, Full Flow



Body in brass.
Plate in polymer.
O-ring in NBR.
Spring in stainless steel.
Size: 1/2" -2"
PN 10-12

Art.077

Madrid® Ball Valve, Full



Male/female threads.
Lever handle in steel.
Body in nickel-plated brass
Size: 1/2" -2"
PN 25-50

ART.100

Europa® Check Valve



Female/female threads.
T handle in aluminum.
Body in nickel-plated brass.
Size: 1/2" -1"
PN 40-50

Art.079

Madrid® Ball Valve, Full



Male / female threads.
T handle in aluminum.
Body in nickel-plated brass.
Size: 1/2" -1"
PN 40-50

Art.080

Paris® Ball Valve, Full Flow



Female/female threads. Lever handle in steel.
Body in nickel-plated brass
Size: 1/2" -2"
PN 25-50

Art.081

Paris® Ball Valve, Full



Male/female threads.
Lever handle in steel.
Body in nickel-plated brass.
Size: 1/2" -2"
PN 25-50

Art.082

Paris® Ball Valve, Full Flow



Female/female threads.
T handle in aluminum.
Body in nickel-plated brass.
Size: 1/2" -1"
PN 40-50

Art.083

Paris® Ball Valve, Full Flow



Male/female threads.
T handle in aluminum. Body in nickel-plated brass.
Size: 1/2" -1"
PN 40-50

Art.090

Ideal® Ball Valve, Full Flow



Female/female threads.
Lever handle in steel
Body in nickel-plated brass.
Size: 1/2" -4"
PN 14-50

Brass Valves and Fittings

Valves Ball Valves & Gate Valves

Art.091

Ideal® Ball Valve, Full Flow



Male/female threads.
Lever handle in steel.
Body in nickel-plated brass.
Size: 1/2" -2"
PN 25-50

Art.092

Ideal® Ball Valve, Full Flow



Female/female threads.
T handle in aluminium.
Body in nickel-plated brass
Size: 1/2" -1 1/4"
PN 30-50

Art.093

Ideal® Ball Valve, Full Flow



Male/female threads.
T handle in aluminium.
Body in nickel-plated brass
Size: 1/2" -1 1/4"
PN 30-50

Art.098

Ideal® Ball Valve, Full Flow for Manifolds



Male/female threads.
T handle in aluminium.
Body in nickel-plated brass.
Size: 1/2" -1 1/4"
PN 30-50

Art.098S

Ideal® Ball Valve with O-Ring, Full Flow for Manifolds



Male/female threads.
T handle in aluminium.
Body in nickel-plated brass
Size: 1/2" -1 1/4"
PN 30-50

Art.098SDC Ideal® Ball Valve without Union, Full Flow for Manifolds



Male/female threads.
T handle in aluminium.
Body in nickel-plated brass.
Size: 3/4" -1 1/4"
PN 30-40

Art.099

Full Flow Ball Valve, Male-Male Threads



Male/male threads.
Lever handle in aluminium
Body in nickel-plated brass
Size: 1/2" -2"
PN 30-40

Art.111

Orient® Ball Valve, Reduced Flow



Female/female threads. Lever handle in steel.
Body in nickel-plated brass
Size: 1/2" -4"
PN 12-50

Art.112

Orient® Ball Valve, Reduced Flow



Male/female threads.
Lever handle in steel.
Body in nickel-plated brass.
Size: 1/2" -1"
PN 40-50

Valves

Ball Valves & Gate Valves

Art.113 Orient® Ball Valve, Reduced Flow



Female/female threads.
T handle in aluminium. Body in nickel-plated brass.
Size: 1/2" -1"
PN 40-50

Art.114 Orient® Ball Valve, Reduced Flow



Male/female threads.
T handle in aluminium. Body in nickel-plated brass.
Size: 1/2" -1"
PN 40-50

Art.115 Standard Flow Ball Valve With Drain Valve



Female/female threads. Lever handle in steel. Body in nickel-plated brass.
Size: 1/2" -2"
PN 20-25

Art.116 Vienna® Ball Valve, Standard Flow



Female/female threads.
Lever handle in steel. Body in nickel-plated brass.
Size: 1/2" -2"
PN 25-30

Art.117 Vienna® Ball Valve, Standard Flow



Male/female threads.
Lever handle in steel. Body in nickel-plated brass.
Size: 1/2" -2"
PN 25-50

Art.118 Vienna® Ball Valve, Standard Flow



Female/female threads.
T handle in aluminium. Body in nickel-plated brass. Size: 1/2" -1"
PN 30-50

Art.119 Vienna® Ball Valve, Standard Flow



Male/female threads.
T handle in aluminium. Body in nickel-plated brass.
Size: 1/2" -1"
PN 30-50

Art.120 Mondial® Ball Valve, Full Flow



Threads: female/female.
Lever handle in aluminium. Body in nickel-plated brass.
Size: 2 1/2" -4"
PN 14-18

Art.121 Mondial® Ball Valve, Full Flow



Threads: male/female.
Lever handle in aluminium. Body in nickel-plated brass.
Size: 2 1/2" -4"
PN 14-18

Brass Valves and Fittings

Valves Ball Valves & Gate Valves

Art.125 Mini Ball Valves



Female/female.
Lever handle in
nylon
Size: 3/8" -3/4"
PN 15

Art.126 Mini Ball Valves



Male / female.
Lever handle in
nylon
Body in nickel-
plated brass.
Size: 3/8" -3/4"
PN 15

Art.128 3-Way Ball Valve



Female/female/
female threads.
Lever handle
in aluminium.
Body in nickel-
plated brass.
Size: 1/2" -2"
PN 35-55

Art.145 Stream® Ball Valve, Full Flow



Female/female
threads.
Flat lever handle
in lined steel.
Body in brass
Size: 1/2"-2"
PN 150 WSP

Art.156 Brass Gate Valve PN16



Female/female
threads. Handle
in steel.
Body in brass
Size: 1/2"-4 "
PN 16

Art.166 Gar Ball Hose Bibcock



Body in nickel-
plated brass.
Hose connec-
tion in brass.
Lever handle in
steel.
Size: 1/2"-3/4"
PN 15

Art.211 Orient® Ball Valve, Re- duced Flow



Male/male
threads.
Lever handle in
aluminium Body
in nickel-plated
brass
Size: 1/2" -2"
PN 30-40

Art.216 Vienna® Ball Valve, Stan- dard Flow



Female/female
threads. Lever
handle in steel.
Body in nickel-
plated brass
Size: 1/2" -4"
PN 12-50

Art.298 Ideal® Angle Ball Valve, Full Flow for Manifolds



Male/female
threads.
Lever handle in
steel.
Body in nickel-
plated brass.
Size: 1/2" -1"
PN 40-50

Valves

Ball Valves & Gate Valves

Art.298S Ideal® Angle Ball Valve with O-Ring, Full Flow for Manifolds



Male/female threads.
T handle in aluminium.
Angle body in nickel-plated brass.
Size: 1/2" -1"
PN 40-50

Art.298SDC Ideal® Angle Ball Valve without Union, Full Flow for Manifolds



Male/female threads.
T handle in aluminium.
Angle body in nickel-plated brass.
Size: 3/4" -1"
PN 40

Art.376 Green® Ball Valve, Full Flow



Female/female threads.
Flat lever handle in lined steel.
Body in chrome-plated brass.
Size: 1/2" -2"
PN 25-50

Art.377 Green® Ball Valve, Full Flow



Male/female threads.
Flat lever handle in lined steel.
Body in chrome-plated brass.
Size: 1/2" -2"
PN 25-50

Art.378 Green® Ball Valve, Full Flow



Female/female threads.
T handle in aluminium.
Body in chrome-plated brass.
Size: 1/2" -1"
PN 40-50

Art.379 Green® Ball Valve, Full Flow



Male/female threads.
T handle in aluminium.
Body in chrome-plated brass.
Size: 1/2" -1"
PN 40-50



Brass Valves and Fittings

Valves Build in Valves & Supply Stops

Art.136

Build- in Valve with Blind Cap



Body in brass.
Cover plate in stainless steel.
Cap in chrome-plated brass.
Size: 1/2" - 3/4"
PN 25, 30.

Art.138

Build- in Valve with Handle



Body in brass.
Cover plate in stainless steel.
Lever handle in chrome-plated brass.
Size: 1/2"-1"
PN 25, 30.

Art.340

Build- in Valve with Blind Cap



Body in brass.
Cover plate & cap in chrome-plated ABS.
Size: 1/2"-3/4"
PN15-20

Art.345

Build- in Valve with Handle



Body in brass.
Cover plate & handle in chrome-plated ABS.
Size: 1/2"-3/4"
PN 20, 15

Art.346

Supply Stop



Body in chrome-plated brass.
Cover plate in stainless steel.
Size: 1/2"
PN8

Art.348

Supply Stop with Nut & Washer



Body in chrome-plated brass.
Cover plate in stainless steel.
Size: 1/2"
PN8

Art.375

Toilet Tank Valve



Body in nickel-plated brass.
Size: 3/8"
PN16

Art.385

Ball Supply Stop with Strainer



Body in chrome-plated brass.
Cover plate in stainless steel.
Built-in strainer in stainless steel.
Size: 1/2"
PN8

Art.386

Ball Supply Stop with Articulated Connection



Body in chrome-plated brass.
Cover plate in stainless steel.
Built-in strainer in stainless steel.
Size: 1/2"
PN8

Valves

Build in Valves & Supply Stops

Art.387 Supply Stop & Washing Machine Valve



Body in chrome-plated brass.
Cover plate in stainless steel.
Size: 1/2"
PN8

Art.906 Ball Supply Stop with Strainer



Body in chrome-plated brass.
Cover plate in stainless steel.
Built-in strainer in stainless steel.
Size: 1/2"
PN8

Art.PROL 340 Spacer



Art.PROL 136 Spacer



Save Water, Save Life



Brass Valves and Fittings

Valves Washing Machine Valves

Art.220
Bibcock with Washing Machine Valve



Body in chrome-plated brass.
Size: 1/2"
PN8

Art.225
Horizontal Washing Machine Valve, Heavy Pattern



Body in chrome-plated brass.
Size: 1/2"
PN16

Art.226
Horizontal Washing Machine Valve



Body in chrome-plated brass.
Size: 1/2"
PN16

Art.228
Inclined Washing Machine Valve



Body in chrome-plated brass.
Size: 1/2"
PN16

Art.230
One-Piece Spacer for Faucets



Body in chrome-plated brass.
Size: 3/4"
PN16

Art.240
Washing Machine & Dishwasher Valve



Body in chrome-plated brass.
Size: 1/2"
PN16

Art.250
Washing Machine Valve



Body in chrome-plated brass.
Size: 1/2"
PN16

Art.255
3- Way Washing Machine Valve



Body in chrome-plated brass.
Size: 1/2"
PN16

Art.390
Drain Trap for Washing Machines



Body in nickel-plated brass.
Cover plate in stainless steel.
Spring in stainless steel.
Size: 3/4"
PN16

Valves

Washing Machine Valves

Art.391 Washing Machine Ball Valve



Body in nickel-plated brass.
Size: 1/2"
PN16

Art.392 Washing Machine Ball Valve



Body in nickel-plated brass.
Size: 1/2"
PN16

Art.488 Angle Valve



Body in chrome-plated brass.
Handle in chromeplated ABS.
Size: 1/2"
PN16

Art.706 Washing Machine Ball Valve



Body in chrome-plated brass.
Cover plate in stainless steel.
Size: 1/2"
PN8



Brass Valves and Fittings

Valves

Accessories for Solar Heating Systems

Art.139S Drain Ball Valve with Brass Hose Connection for Solar Heating Systems



Body in brass.
Hose connection in brass.
Size: 1/2"
PN10

Art.477 Temperature & Pressure Relief Valve for Solar Heating Systems



Body in brass.
Size: 3/4"
PN10

Art.478 Diaphragm Safety Relief Valve



Body in nickel-plated brass.
Size: 1/2" x 3/4"
PN10

Art.362S Automatic Air Vent Valve for Solar Heating Systems



Body in nickel-plated brass.
Size: 3/8"-1/2"
PN10

Art.982 3- Way Diverter Zone Ball Valve



Body in chrome-plated brass.
Size: 3/4"
PN16

Art.475 Thermostatic Mixing Valve for Solar Heating Systems



Body in nickel-plated brass.
Size: 3/4"-1"
PN10



Heating Air Vent Valves & Safety Valves

Art.194 Air Vent Valve



Body in chrome-plated brass.
Handle in acetalic resin.
Size: 1/4" - 1/2"
PN10

Art.1940 Air Vent Valve



Body in nickel-plated brass.
Handle in nylon.
Size: 1/2"
PN10

Art.1940G Adjustable Air Vent Valve



Body in brass.
Handle in nylon.
Size: 1/2"
PN10

Art.195 Revolving Drain Cock



Body in nickel-plated brass.
Revolving drain in acetalic resin.
Size: 1/4" - 1/2"
PN10

Art.196 Drain Cock



Body in chrome-plated brass.
Size: 1/4"
PN20

Art.299 Plug for Radiators with Air Vent Valve



Body in chrome-plated brass.
Size: 1"
PN10

Art.362 Automatic Air-Vent Valve



Body in nickel-plated brass.
Float in poly-ethilenic resin.
O-ring in NBR.
Size: 3/8" - 1"
PN10

Art.362R Automatic Air-Vent Valve, Compact



Body in nickel-plated brass.
Float in poly-ethilenic resin.
O-ring in NBR.
Size: 3/8" - 1/2"
PN10

Art.363 Automatic Air-Vent Valve, Side Outlet



Body in nickel-plated brass.
Float in poly-ethilenic resin.
O-ring in NBR.
Size: 3/8" - 1/2"
PN10

Brass Valves and Fittings

Heating Air Vent Valves & Safety Valves

Art.364

Automatic Air-Vent Valve, Side Inlet



Body in nickel-plated brass.
Float in poly-ethilenic resin.
O-ring in NBR.
Size: 3/8"-1/2"
PN10

Art.364R

Automatic Air-Vent Valve, Side Inlet, Compact



Body in nickel-plated brass.
Float in poly-ethilenic resin.
O-ring in NBR.
Size: 3/8"-1/2"
PN10

Art.365

Automatic Check Valve



Suitable for the use together with automatic air vent valves art. 362 - 362R - 363 - 364 - 364R.
Body in nickel-plated brass.
Size: 3/8"-1/2"
PN10

Art.366

Safety Relief Valve for Boilers



Body in nickel-plated brass.
Check and vent spring valve in stainless steel.
Check seat in nylon.
Check and vent seal in NBR.
Size: 1/2"
PN10

Art.367

Safety Relief Valve for Boilers with Lever Handle



Body in nickel-plated brass.
Check and vent spring in stainless steel.
Check seat in nylon.
Check and vent seal in NBR.
Size: 1/2"
PN10

Art.368

Diaphragm Safety Relief Valve



Body in nickel-plated brass.
Diaphragm: EPDM.
Spring: stainless steel.
Size: 1/2"-1"
PN10
Available settings: 1,5 - 1,8 - 2,5 - 3 - 4 - 6.

Art.368

Diaphragm Safety Relief Valve



Body in nickel-plated brass.
Diaphragm: EPDM.
Spring: stainless steel.
Size: 1/2"-1"
PN10
Available settings: 1,5 - 1,8 - 2,5 - 3 - 4 - 6.

Art.368M

Diaphragm Safety Relief Valve with Pressure Gauge Connection Female-Female Thread



Body in nickel-plated brass.
Diaphragm: EPDM.
Spring: stainless steel.
Size: 1/2"
PN10
Available settings: 1,5 - 1,8 - 2,5 - 3 - 4 - 6.

Art.369M

Diaphragm Safety Relief Valve With Pressure Gauge Connection Male-Female Thread



Body in nickel-plated brass.
Diaphragm: EPDM.
Spring: stainless steel.
Size: 1/2"
PN10
Available settings: 1,5 - 1,8 - 2,5 - 3 - 4 - 6.

Heating Convertible Valves & Lock Shields

Art.296 Straight Lockshield



Body in nickel-plated brass
Size: 1/2"-3/4"
PN10

Art.296S Straight Lockshield, Female Thread



Body in nickel-plated brass
Size: 3/8"-3/4"
PN10

Art.297S Straight Lockshield, Male Thread



Body in nickel-plated brass.
Size: 3/8"-1/2"
PN10

Art.396S Angle Lockshield, Female Thread



Body in nickel-plated brass
Size: 3/8"-3/4"
PN10

Art.894C Straight Convertible Valve with Cap, Female Thread



Body in nickel-plated brass
Size: 3/8"-3/4"
PN10

Art.894CPS Straight Convertible Valve, Female Thread



Body in nickel-plated brass
Size: 3/8"-3/4"
PN10

Art.894V Straight Convertible Valve with Handle, Female Thread



Body in nickel-plated brass.
Size: 3/8"-1/2"
PN10

Art.895C Straight Convertible Valve with Cap, Male Thread



Body in nickel-plated brass.
Size: 3/8"-1/2"
PN10

Art.994V Angle Convertible Valve with Handle, Female Thread



Body in nickel-plated brass
Size: 3/8"-1/2"
PN10

Brass Valves and Fittings

Heating Air Vent Valves & Safety Valves

Art.895CPS **Straight Convertible Valve,** **Male Thread**



Body in nickel-plated brass.
Size: 3/8"-1/2"
PN10

Art.995C **Angle Convertible Valve** **with Cap, Male Thread**



Body in nickel-plated brass
Size: 3/8"-1/2"
PN10

Art.895V **Straight Convertible Valve** **with Handle, Male Thread**



Body in nickel-plated brass.
Size: 3/8"-1/2"
PN10

Art.995CPS **Angle Convertible Valve,** **Male Thread**



Body in nickel-plated brass
Size: 3/8"-1/2"
PN10

Art.994C **Angle Convertible Valve with** **Cap, Female Thread**



Body in nickel-plated brass
Size: 3/8"-3/4"
PN10

Art.995V **Angle Convertible Valve** **with Handle, Male Thread**



Body in nickel-plated brass
Size: 3/8"-1/2"
PN10

Art.994CPS **Angle Convertible Valve,** **Female Thread**



Body in nickel-plated brass
Size: 3/8"-3/4"
PN10

Art.294 **Straight Manual Valve**



Body in nickel-plated brass.
Size: 3/8"-1/2"
PN10

Art.294S **Straight Manual Valve**



Body in nickel-plated brass
Size: 3/8"-1/2"
PN10

Heating

Convertible Valves & Lock Shields

Art.295 Straight Manual Valve



Body in nickel-plated brass
Size: 3/8"-3/4"
PN10

Art.295S Straight Manual Valve



Body in nickel-plated brass.
Size: 1/2"
PN10

Art.297 Straight Lockshield



Body in nickel-plated brass
Size: 1/2"
PN10

Art.394 Angle Manual Valve



Body in nickel-plated brass
Size: 3/8"-3/4"
PN10

Art.394S Angle Manual Valve



Body in nickel-plated brass
Size: 3/8"-3/4"
PN10

Art.395 Angle Manual Valve



Body in nickel-plated brass
Size: 3/8"-1/2"
PN10

Art.395S Angle Manual Valve



Body in nickel-plated brass
Size: 3/8"-1/2"
PN10

Art.396 Angle Lockshield



Body in nickel-plated brass
Size: 3/8"-3/4"
PN10

Art.397 Angle Lockshield



Body in nickel-plated brass
Size: 3/8"-1/2"
PN10

Brass Valves and Fittings

Fittings

Compression Fittings for Copper Pipes

Art.509 Straight Female Connector



Nickel plated brass
Sizes: 1/2"x1/2",
1/2"Mx3/4"F 3/4"x3/4"
eurokonus
PN 20.

Art.515 Straight Male Connector



Nickel plated brass
PTL
Sizes: 1/2"x1/2",
1/2"x3/4" eurokonus,
3/4"x3/4" euroko-
nus, 1"x1"
PN 20.

Art.530 Equal T Coupling



Nickel plated
brass
Sizes: 1/2", 3/4"
and 1"
PN 20.

Art.535 Female Branch T Coupling



Nickel plated brass
Sizes: 1/2"x1/2"x1/2",
3/4"x3/4"x3/4" euro-
konus
PN 20.

Art.540 Male Elbow



Nickel plated brass
Sizes: 1/2"x1/2",
1/2"x3/4" euroko-
nus, 3/4"x3/4" euro-
konus, 1"x1"
PN 20.

Art.545 Female Elbow



Nickel plated
brass
Sizes: 1/2"x1/2"
1/2"Mx3/4"F
3/4"x3/4" euro-
konus
PN 20.

Art.548 Backplate Female Elbow



Nickel plated brass
Sizes: 1/2"x1/2"
3/4"x3/4" eurokonus
PN 20.

Art.595 Nut & Olive



Nut: Nickel plated
brass
Ring: brass
Washer: EPDM
Sizes: 1/2", 3/4"
PN 16

Art.598 Nut & Olive



Nut: Nickel plated
brass
Ring: brass
Washer: HNBR
Sizes: 1/2", 3/4"
PN 16

Fittings

Itap-Fit® Fittings

Art.610 Straight Female Connector



Bodies in de-zincification resistant brass (DZR).
Size: 1/2"-1"
Pressure: Copper pipe: 10-20
PEX & polybutylene pipes: 5-12

Art.615 Straight Male Connector



Bodies in de-zincification resistant brass (DZR).
Size: 1/2"-1"
Pressure: Copper pipe: 10-20
PEX & polybutylene pipes: 5-12

Art.620 Straight Coupling



Bodies in de-zincification resistant brass (DZR).
Pressure: Copper pipe: 10-20
PEX & polybutylene pipes: 5-12

Art.625 Stop End



Bodies in de-zincification resistant brass (DZR).
Pressure: Copper pipe: 10-20
PEX & polybutylene pipes: 5-12

Art.630 Equal T Coupling



Bodies in de-zincification resistant brass (DZR).
Size: 12 - 28mm
Pressure: Copper pipe: 10-20
PEX & polybutylene pipes: 5-12

Art.635 Female Branch T Coupling



Bodies in de-zincification resistant brass (DZR).
Size: 1/2"-1"
Pressure: Copper pipe: 10-20
PEX & polybutylene pipes: 5-12

Brass Valves and Fittings

Fittings Itap-Fit® Fittings

Art.640 Male Elbow



Bodies in de-zincification resistant brass (DZR).
Size: 1/2"-1"
Pressure: Copper pipe: 10-20
PEX & polybutylene pipes: 5-12

Art.645 Female Elbow



Bodies in de-zincification resistant brass (DZR).
Size: 1/2"-1"
Pressure: Copper pipe: 10-20
PEX & polybutylene pipes: 5-12

Art.648 Backplate Female Elbow



Bodies in de-zincification resistant brass (DZR).
Size: 1/2"
Pressure: Copper pipe: 10-20
PEX & polybutylene pipes: 5-12

Art.650 Elbow Coupling



Bodies in de-zincification resistant brass (DZR).
Size: 12 - 28mm
Pressure: Copper pipe: 10-20
PEX & polybutylene pipes: 5-12



Fittings

Mechanical Fittings & Accessories

Art.110 5- Way Connector for Pumps & Tanks



Brass
Size: 1"
PN 25

Art.151 3- Piece Straight Connec- tor, Flat Washer



Body in brass
or nickel-plated
brass.
Size: 1/2"-2":
PN 25-50

Art.152 3- Piece Elbow, Flat Washer



Body in brass
or nickel-plated
brass.
Size: 1/2"-1 1/4"
PN 30-50

Art.154 Connector for Water Me- ters



Nut and tail in
brass.
Size: F3/4"xM1/2",
F1"xM3/4",
F1"1/4"xM1",
F1"1/2"xM1"1/4,
F2"xM1"1/2,
F2"1/2"xM2"
PN 20

Art.161 3- Piece Straight Connector, With O-Ring



Body in brass or
nickel-plated brass.
Size: 1/2" - 2"
PN 25-50

Art.161G 3- Piece Straight Connec- tor, With O-Ring



Body in brass or
nickel-plated brass.
Size: 1/2" - 1 1/4"
PN 30-50

Art.162 3- Piece Elbow, with O- Ring



Body in brass or
nickel-plated brass.
Size: 1/2" - 1 1/4"
PN 30-50

Art.275 Reduction



Brass.
Size: 3/8" x 1/2"

Art.276 Reduction, Inner Hexagon



Nickel plated brass.
Size: 3/4" x 1/2"

Brass Valves and Fittings

Fittings

Multi-Fit® Fittings

Art.510 Multi-Fit® Fitting for Multilayer, Pex & Polybutylene Pipe



Nut in nickel-plated brass.
Tail in brass.
Size: 1/2", 3/4" nut EUROKONUS and 1" nut.
PN 20

Art.510R Multi-Fit® Fitting for Multilayer, Pex & Polybutylene Pipe



Nut in nickel-plated brass.
Tail in polymer.
Size: 1/2", 3/4" nut EUROKONUS and 1" nut.
PN 20

Art.595P Nut & Adapter for Pex Pipe



Available sizes with 3/4" nut EUROKONUS.
Maximum working PN 10.

Art.595M Nut & Adapter for Multilayer Pipe



Nut: Nickel plated brass
Ring: brass
Tail: brass
Size: 1/2"- 3/4"
PN 10

Fittings

Vx Fittings for Polyethylene

Art.010
Straight Female Connector



Brass
Size: 1/2" - 2"
PN 25

Art.010FL
Straight Female Connector



Brass
Size: 2 1/2" - 4"
PN 25

Art.015
Straight Male Connector



Brass
Size: 1/2" - 2"
PN 25

Art.015FL
Straight Male Connector



Brass
Size: 2 1/2" - 4"
PN 25

Art.020
Straight Coupling



Brass
Size: 1/2" - 2"
PN 25

Art.020FL
Straight Coupling



Brass
Size: 2 1/2" - 4"
PN 25

Art.025
Extended Coupling Sleeve, to Repair Pipes



Brass
Size: 1" - 2"
PN 25

Art.030
Equal T Coupling



Brass
Size: 1/2" - 2"
PN 25

Art.030FL
Equal T Coupling



Brass
Size: 2 1/2" - 3"
PN 25

Brass Valves and Fittings

Fittings

Vx Fittings for Polyethylene

Art.035
Female Branch T Coupling



Brass
Size: 1/2" - 2"
PN 25

Art.035FL
Female Branch T Coupling



Brass
Size: 2 1/2" - 4"
PN 25

Art.040
Male Elbow



Brass
Size: 1/2" - 2"
PN 25

Art.040FL
Male Elbow



Brass
Size: 2 1/2" - 3"
PN 25

Art.045
Female Elbow



Brass
Size: 1/2" - 2"
PN 25

Art.045FL
Female Elbow



Brass
Size: 2 1/2" - 4"
PN 25

Art.048
Backplate Female Elbow



Brass
Size: 1/2" - 1"
PN 25

Art.050
Elbow Coupling



Brass
Size: 1/2" - 2"
PN 25

Art.050FL
Elbow Coupling



Brass
Size: 2 1/2" - 3"
PN 25

Fittings

Vx Fittings for Polyethylene

Art.055 Stainless Steel Liner



Stainless Steel
Size: 1/2" - 4"

Art.056 O-Ring for Vx & Vx-N Fittings



Elastomer
Size: 1/2" - 4"

Art.057 O-Ring Pushing Washer for Vx & Vx-N Fittings



Stainless Steel
Size: 1/2" - 4"

Art.058 Fastening Ring for Vx & Vx-N Fittings



Brass
Size: 1/2" - 4"



Brass Valves and Fittings

Fittings

Vx-N Fittings for Polyethylene

Art.710
Straight Female Connector



Brass
Size: 1/2" - 1 1/4"
PN 25

Art.715
Straight Male Connector



Brass
Size: 1/2" - 1 1/4"
PN 25

Art.720
Straight Coupling



Brass
Size: 1/2" - 1 1/4"
PN 25

Art.730
Equal T Coupling



Brass
Size: 1/2" - 1 1/4"
PN 25

Art.735
Female Branch T Coupling



Brass
Size: 1/2" - 1 1/4"
PN 25

Art.740
Male Elbow



Brass
Size: 1/2" - 1 1/4"
PN 25

Art.745
Female Elbow



Brass
Size: 1/2" - 1 1/4"
PN 25

Art.750
Elbow Coupling



Brass
Size: 1/2" - 1 1/4"
PN 25

Reducing Valves & Strainers

Pressure Reducing Valves

Art.143MM

Europress Pressure Reducing Valve, with Union Connections



Body in nickel-plated brass.
Size: 1/2" - 2"
PN 25

Art.143

Europress Pressure Reducing Valve



Body in nickel-plated brass.
Size: 1/2" - 4"
PN 25

Art.360

Minipress Pressure Reducing Valve



Body in nickel-plated brass.
Size: 1/2" - 3/4"
PN 15

Art.361

Minipress Pressure Reducing Valve, with Pressure Gauge Connection



Body in nickel-plated brass.
Size: 1/2" - 3/4"
PN 15



Brass Valves and Fittings

Reducing Valves & Strainers

Art.189 Self-Cleaning Strainer



Body in nickel-plated brass.
Size: 1/2" - 2"
PN16

Art.189CA Cartridge for Self-Cleaning Strainer Art.189



Stainless steel
Size: 1/2" - 2"

Art.192 Y Strainer



Body in brass.
Size: 1/2" - 4"
PN 16,20

Art.192CA Cartridge for Y Strainer Art.192-193



Stainless steel.
Size: 1/2" - 4"

Art.193 Nickel-Plated Y Strainer



Body in nickel-plated brass.
Size: 1/2" - 4"
PN20

Part 7



Flanges



Flanges

Type of Flanges

Description:

Standard: ISO 7005 - EN 1092 - DIN - BSTD - ASTM / ANSI

Material: A105 / ST 37 /ST.ST

PN: 16/25/40

Slip- On Flange



Blind Flange



Welded Neck Flange



Threaded Flange



Hubbed Slip On



Part 8



Pipes & Pipes Fittings

Pipes & Pipes Fittings

Steel Pipes (Black, Galvanized, Coated) & Fittings

- Galvanized Pipes with 3LPE/3LPP Coating



- » Material:
Pipes: Carbon steel pipes; galvanized welded
Coating: 3LPE, 3LPP
- » Size: 1/2" to 6"
- » Length: 5.8m / 6m
- » Standards:
Pipes: PS 186, PS 141, PS 107, SI 103, DIN 2440, ASTM A 53, ASTM A106, API 5L.
External Coating: PS325-6, AWWA C215 ,DIN 30670
- » Packing: in bundles or as customers' requirement
- » Finish: plain end or threaded
- » Applications: water works pipelines, oil & gas pipelines

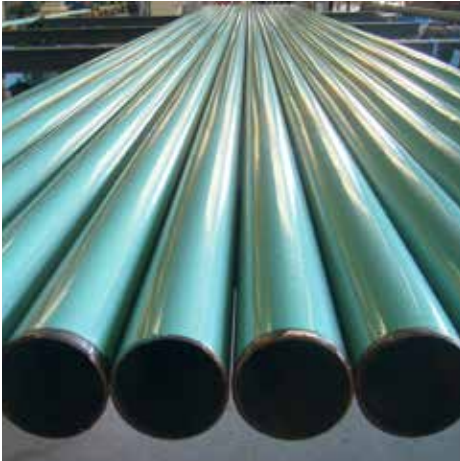
- Steel Pipes with 3LPE/3LPP Coating & Cement lining.



- » Material:
Pipes: Carbon steel pipes galvanized or black; welded (ERW, SAW) or seamless
Coating: 3LPE, 3LPP
- » Size: 3" to 16"
- » Length: 6m / 12.2m
- » Standards:
Pipes: PS 186, PS 107, SI 530, DIN 2440, ASTM A 53, ASTM 106, API 5L.
External Coating: PS325-6, AWWA C215, DIN 30670 or as customers' requirement
Internal Cement Lining: PS325-1, AWWAC205 or as customers' requirement
- » Packing: single or as customers required.
- » Finish: plain end or beveled
- » Applications: water works pipelines, oil & gas pipelines, waste water pipelines.

Steel Pipes (Black, Galvanized, Coated) & Fittings

- Steel Pipes with FBE (Fusion bonded or liquid epoxy coating with Cement lining)



- » Material:
Pipes: Carbon steel pipes galvanized or black ; welded (ERW, SAW) or seamless
- » Coating: FBE , liquid epoxy
- » Size: 3" to 24"
- » Length: 6m/ 12.2m
- » Standards:
Pipes: PS 186, PS 107, SI 530, DIN 2440, ASTM A 53, ASTM A106, API 5L.
External Coating: AWWA C213, AWWA C218, AWWA C210 or as customers' requirement.
Internal Cement Lining: PS325-1, AWWA C205 or as customers' requirement.
- » Packing: single or as customers' requirement.
- » Finish: plain end or beveled
- » Applications: water works pipelines (under ground and above ground), oil & gas pipelines.

- Steel Pipes with FBP (Fusion Bonded Polyester Powder Coating) for Fire Fighting Systems



- » Material:
Pipes: Carbon steel pipes galvanized or black ; welded (ERW) or seamless
Coating: Polyester
- » Size: 1/2" to 10"
- » Length: 6m, or as customers required
- » Standard:
Pipes: ASTM A 53, ASTM A106, ASTM A795, API 5L.
External Coating: as customers' required.
- » Packing: In bundles or single, as customers' required.
- » Finish: plain end, grooved, threaded, or beveled
- » Applications: suitable for automatic fire extinguishing system

Pipes & Pipes Fittings

Steel Pipes (Black, Galvanized, Coated) & Fittings

- Steel Pipes fittings with Cement lining. (Elbows, Reducers, Pipe tees...)



- » Material: Carbon steel
- » Size: DN 50- 500
- » Standard:
Steel pipes fittings: ASME/ASTM SA/A 234 , ANSI B-16.9
Internal Cement Lining: PS325-1, AWWAC205 or as customers' requirement
- » Packing: pallets, Wooden case
- » Applications: water works pipelines, oil & gas pipelines, waste water pipelines

PVC & HDPE Pipes

- Corrugated PE/PP Pipes



- » Standards: EN13476-3
- » Diameters (ID): Ø150, Ø200, Ø250, Ø300, Ø400, Ø500, Ø600, Ø800, Ø1000.
- » Ring Rigidity: SN4, SN8
- » Structure: Multilayer.
- » Colour:
HDPE: Outer Surface: Black
Stripes- SN4: Orange, SN8: Blue
PP: Outer Surface: Black
Stripes- SN4: Light Blue, SN8 Green
- » Pipe Length: 6m, 7m.
- » Service Life: Min. 50 Years
- » Working Liquid Temperature: HDPE: 35°C PP: 65°C
- » Density: HDPE: → 0.95 PP: → 0.9
- » Application: Sewer and Storm

PVC & HDPE Pipes

- HDPE Pipes



- » Materials: HDPE \ LDPE
- » SDR range: 7.4 - 26
- » Diameter range: Ø20 mm - Ø630 mm
- » Length: Pipes, in coils of up to Ø125 mm (Pipes above 125mm are supplied in 12m long, or otherwise agreed with customer)
- » Colors: Blue, black and blue stripes on
- » Standards:
 - ISO 4427 \ PS196 \ EN12201 for water
 - ISO 4437 \ EN1555 for Gas
 - ISO 8779 for Agricultural Applications
- Working Pressure: 16

- PVC Pipes for Wastewater Applications



- » Application: For buried sewers, storm water, and venting applications inside buildings
- » Diameters: Ø110, Ø500
- » Length: 150 mm to 4000 mm lengths up to
- » Color: Orange
- » Thickness: SN4 (light), SN8 (Heavy)

Pipes & Pipes Fittings

iJOINT Mechanical Compression Fittings

The iJOINT is available in a wide range of diameters from d20 to d110 mm and suitable for use with all types of polyethylene pipes PE 80, PE 100, PEX and PVC-U with special transition kit.

Pressure rating up to 16 bar

Temperature range -10°C to +45°C

Dimension range d20 to d110 mm

Main Applications:

- Water Distribution Lines
- House Connections
- Service Lines
- High-end Irrigation

Main Advantages:

- Fast, secure and easy installation
- Special lubricated NBR lip gasket allows outstanding hydraulic performance
- High flow-capacity
- High pressure and pull-out resistance
- Long product lifetime

- Coupling



- Male adaptor



- Reducing coupling



- 90° Tee



- 90° Reducing-Increasing Tee



- 90° Tee with threaded male off take



- 90° Elbow



- 45° Elbow



Pipes & Pipes Fittings

- 90° Elbow with threaded male off



- 45° Elbow with threaded male off take



- End Cap



TIP

“The iJoint fittings are widely used in irrigation and agricultural systems”



Part 9



PEX pipes' brass fittings

Straight nipple male



Straight nipple double



Straight nipple female



Elbow male



Elbow female



Wallplate elbow



Tee



**Elbow 105°
interaxis 34 mm**



Part 10



Water Pumps



Water Pumps

The Wortex range consists of a full range of surface pumps, typically used in domestic water supply, irrigation projects and for pumping water to crips or dams. Pressure pumps are widely used for increasing or stabilizing water pressure in homes, guesthouses, workers houses or office blocks



- » Peripheral pumps must work with clean water or non-aggressive liquids only, without sand or solids in suspension
- » Particularly suitable to increase pressure in a pipeline system.

TIPO - TYPE	POTENZA NOMINALE NOMINAL POWER P2		AMPERE	Q = PORTATA - CAPACITY												MISURA		
Monofase Single-phase			Monofase Single-phase	m3/h	0,3	0,6	1	1,2	1,5	1,8	2,1	2,4	3	3,6	Dimensioni Dimensions	H	MEC	
	lt/1'	5		10	16	20	25	30	35	40	50	60						
230V-50Hz	HP	KW	1 x 230V	Prevalenza manometrica totale in m.C.A. - Total head in meters w.c.											DNA	DNM		
PM 50	0,5	0,37	2,9	H (m)	34	30	25	22	17	13	10				1"	1"	50	63
PM 80	0,8	0,6	3,8		59	55	50	45	40	35	30	25	15		1"	1"	60	71



- » Self-priming centrifugal pumps with a very good suction performance
- » Used for water supply and for household pressurized pipeline systems and small-scale irrigation of gardens.

TIPO - TYPE	POTENZA NOMINALE NOMINAL POWER P2		AMPERE	Q = PORTATA - CAPACITY													MISURA	
Monofase Single-phase			Monofase Single-phase	m/h	0,6	0,9	1,2	1,5	1,8	2,1	2,4	2,7	3	3,6	Dimensioni Dimensions	H	MEC	
				lt/1'	10	15	20	25	30	35	40	45	50	60				
230V-50Hz	HP	KW	1 x 230V	Prevalenza manometrica totale in m.C.A. - Total head in meters w.c.											DNA	DNM		
JET 100	1	0,75	5	H [m]	45	43	40	38	35	33	30	29	26	22	1"	1"	80	71



- » Single-impeller pumps suitable to cover any small, medium or large capacity request
- » For domestic, agricultural and industrial purposes
- » With automatic water distribution through small and medium-sized tanks, for sprinkler and flood irrigation in gardening and agriculture.

TIPO - TYPE	POTENZA NOMINALE NOMINAL POWER P2		AMPERE	Q = PORTATA - CAPACITY												MISURA		
Monofase Single-phase			Monofase Single-phase	m3/h	0,6	1,2	2,7	3,6	5,4	6	7,5	9	12	18	Dimensioni Dimensions	H	MEC	
230V-50Hz	HP	KW	1 x 230V	tt/1'	10	20	45	60	90	100	125	150	200	300	DNA	DNM		
C100	1	0,75	5,5	H [m]	29	28	26	23	20	18	14				1"	1"	80	71

Part 11



Utility fittings installation tools

Utility fittings installation tools

Systems for Mechanical Applications provides the highest quality tools and plumbers accessories which will assure the best performance and work accomplishment. The tools are provided by European Manufacturers and have a wide and full range that covers the needs and requirements of your application.

ROCUT® TC 63 Professional

Plastic pipe shears up to Ø 63 mm (2 1/2")



- » For precise cutting of PP, PE, PEX, PB, PVC and PVDF pipes up to Ø 75 mm
- » Minimum effort during cutting
- » Precise right-angled cuts
- » Pin-point precision without deformation
- » Precise pressure transfer and guided cutter feed
- » Automatic, controlled opening of the blade at the push of a button

TUBE CUTTER 67 / 125 / 168

PL Automatic



- » Telescopic ratchet pipe cutter Ø 6 - 168 mm (6 5/8")
- » For precise cutting of PP, PE, PEX, PB and PVDF pipes as well as sound-insulated drain pipes

One Handed Pipe Wrench "HEAVY DUTY"



- » Sizes: 6" 8" 10" 12" 14" 18" 24" 36" 48" ,60

ROBULL Type E

For precise, manual hydraulic cold bending up to 90°



Broadly applicable, universal portable hydraulic bending system for plumbing, sanitary and heating installation on construction sites, for apparatus and boiler construction and for industrial use.

Also suitable for aligning tubes.

ROBULL Typ E:

For accurate bending up to 90° on pipes made of:

Carbon steel suitable for welding and thread-cutting Ø 3/8 - 2"

SUPER CUT

Ratchet threader Ø 1/4 - 2"

For production of precise and reliable thread connections according EN 10226 on threaded pipe according EN 10255 M / H



**For threading of
BSPT right: Ø 1/4 - 2"**

- » Slim, compact design with excellent overall size, ratchet angle of 22.5°
- » Easy operation in hard-to reach places with the offset lever
- » Convenient, lockable reversal of the ratchet direction
- » Extremely long service life
- » Simple insertion and removal of die heads
- » Secure hold with retainer locking
- » Perfect centering through the long pipe guide is ensured
- » Optimized cutting geometry allows a gentle first cut and excellent chip discharge

Utility fittings installation tools

SUPERTRONIC® 2000 **Power threader Ø 1/4 – 2"**



For threading of
BSPT right: Ø 1/4 - 2"
NPT: Ø 1/4 - 2"
High reduction gears with spur wheel teeth, induction
tempered, 7 parallel gear shafts, each ball bearing mounted
High, consistent power transmission when fully loaded

Performance:
Strong 1,010 W motor, double insulated with VDE and CEE, in-
terference free for reliable long-term use

Threading speed:
15 - 25 min⁻¹ , rapid reverse 60 min⁻¹
(4 x faster reverse with reverse drive)
Maintenance friendly with continuous lubrication

RP 50-S



Robust precision testing pump for pressure testing of
water lines and containers up to 60 bar with very high
testing standards

Testing and pressure range: 0 - 60 bar, with 1 bar steps
0 - 860 psi, with 20 psi steps
0 - 6 MPa, with 0.1 MPa steps
Hub suction capacity: approx. 45 ml / stroke
Tank capacity: 12 l
Dimensions (L x W x H): 720 x 170 x 260 mm
Connection: R 1/2"
Container RP 50-S: Steel, DURAMANT

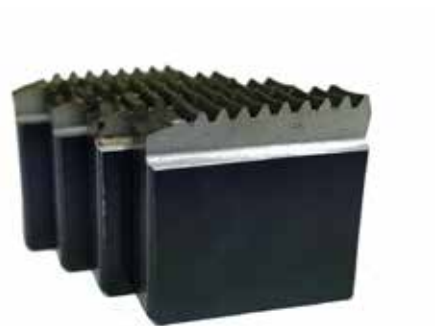
Utility fittings installation tools

Compact threader Ø 1/4 - 2"
**Reliable and proven for
constant professional use**



Universal die head seating (standard or automatic)
Precise guiding of the die head
Low-wear and precise guiding
Fast axial alignment of the pipe
No pipe slippage with impact hammer chuck
Burr-free work

Threading Dies



Precision Threading Dies
Gentle first cut, extremely long life, 4 pieces / pack
**Optimum results are achieved with original ROTHENBERGER
thread cutting fluid**

Part 12



Accessories

- Bolts



Technical data:

- Material: Galvanized, Steel, Alloy Steel, Stainless Steel
- Type: Hex Bolts, Stud
- Threaded: Full Threaded (DIN 933), Half Threaded 931

- Gaskets



Technical data:

- Material: non asbestos. EPDM, SBR Rubber
- Type: Full face, ring
- Thickness: 2.0, 3.0 mm
- PN: 16,25,40,64

- Warning Tape Normal & Magnetic



- Manhole Covers



- Automatic butt fusion machine for construction site

